

The Environment, Leiomyomas, Latinas, and Adiposity Study (ELLAS): Rationale and Design

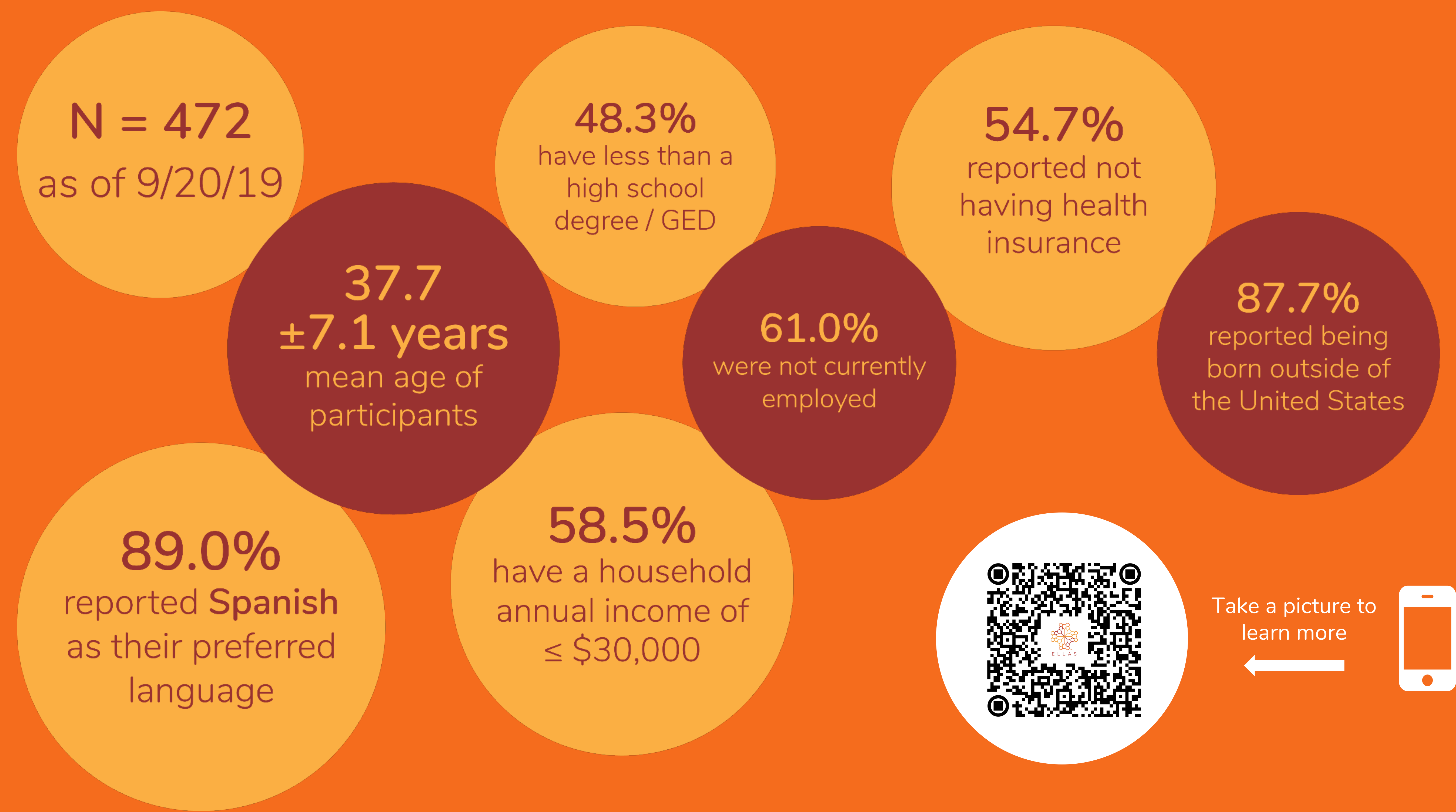
PRESENTERS: **Sandra Thao, MTM, & Felix Valbuena, MD, FAAFP**

RATIONALE

- Although Latinas/x are the fastest growing population of women in the US, minimal information exists on their reproductive health. The Environment, Leiomyomas, Latinas, and Adiposity Study (ELLAS) is a five-year NIMHD-funded study created to address this knowledge deficit.
- ELLAS is a Southeast Michigan-based, community engaged, prospective cohort study of reproductive age Latinas/x.
- Outcomes of interest include the **prevalence of reproductive conditions and their association with obesity and glucose dysregulation.**
- ELLAS is a novel study that will provide essential data for understanding how obesity and glucose dysregulation affect the reproductive health of Latinas/x and will ultimately benefit all women.



ELLAS is a novel community-centered study that will help us understand how **obesity and glucose dysregulation** affect the reproductive health of **Latinas and Latinx people.**



STUDY DESIGN

- A community advisory board (CAB) was formed to provide input on study design and recruitment strategies.
- A total of 600 self-identifying Latina/Hispanic females ages 21 to 50 years will be enrolled. Exclusion criteria include current pregnancy and prior treatment with radiation or chemotherapy.
- Participants complete two visits 20 months apart. Each visit includes anthropometric measurements, a 75g oral glucose tolerance test, transvaginal ultrasound, questionnaires, and specimen collection (urine, blood, and vaginal swab).
- Instructions and questionnaires are available in Spanish and English and the field team is bilingual.

AUTHORS

Sandra Thao, MTM¹; Felix Valbuena, MD, FAAFP²; Richard Bryce, DO²; Donna Baird, PhD, MPH³; Lisa M. Neff, MD, MS⁴; Mercedes Carnethon, PhD⁵; Gricelda Camacho⁶; Anca Tilea, MPH¹; Arthi Ramakrishnan, MS¹; Travertine Garcia⁷; Erica E Marsh, MD, MSCI, FACOG¹

(1) University of Michigan Medical School Department of Obstetrics and Gynecology, Ann Arbor, MI
(2) Community Health and Social Services (CHASS) Center, Detroit, MI
(3) National Institute of Environmental Health Sciences NIH, Epidemiology Branch (NIEHS), Durham, NC
(4) Northwestern University Feinberg School of Medicine Department of Medicine, Chicago, IL
(5) Northwestern University Feinberg School of Medicine Department of Preventive Medicine, Chicago, IL
(6) Loyola University Chicago Stritch School of Medicine, Maywood, IL
(7) University of Michigan School of Public Health, Ann Arbor, MI



This research is supported by the National Institute on Minority Health and Health Disparities (5R01MD011570-04)